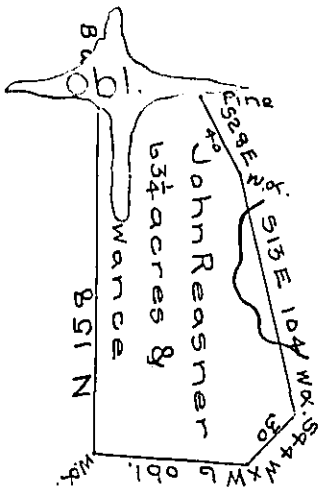


Henry Overendurff

James W Beth



John Foster

Vacant

A draught of a tract of land called — situate in Buffeloe township North^d County adjoining John Foster Henry Overendurff James W. Beth and others containing sixty three acres and one quarter & allowance of 6¹/₂ surveyed April the 10th one thousand seven hundred and eighty seven for John Reasner by virtue of his warrant dated the 8th day of March one thousand seven hundred and eighty Sixth.

Frd^k Evans D.S.

To John Lukens Esq^r }
 Sur^r Gen!

IN TESTIMONY that the above is a copy of the original remaining on file in the Department of Internal Affairs of Pennsylvania, made conformably to an Act of Assembly approved the 16th day of February, 1833, I have hereunto set my Hand and caused the Seal of said Department to be affixed at Harrisburg, this thirteenth day of August 1906.

Geo. C. D. ...
 Secretary of Internal Affairs.